
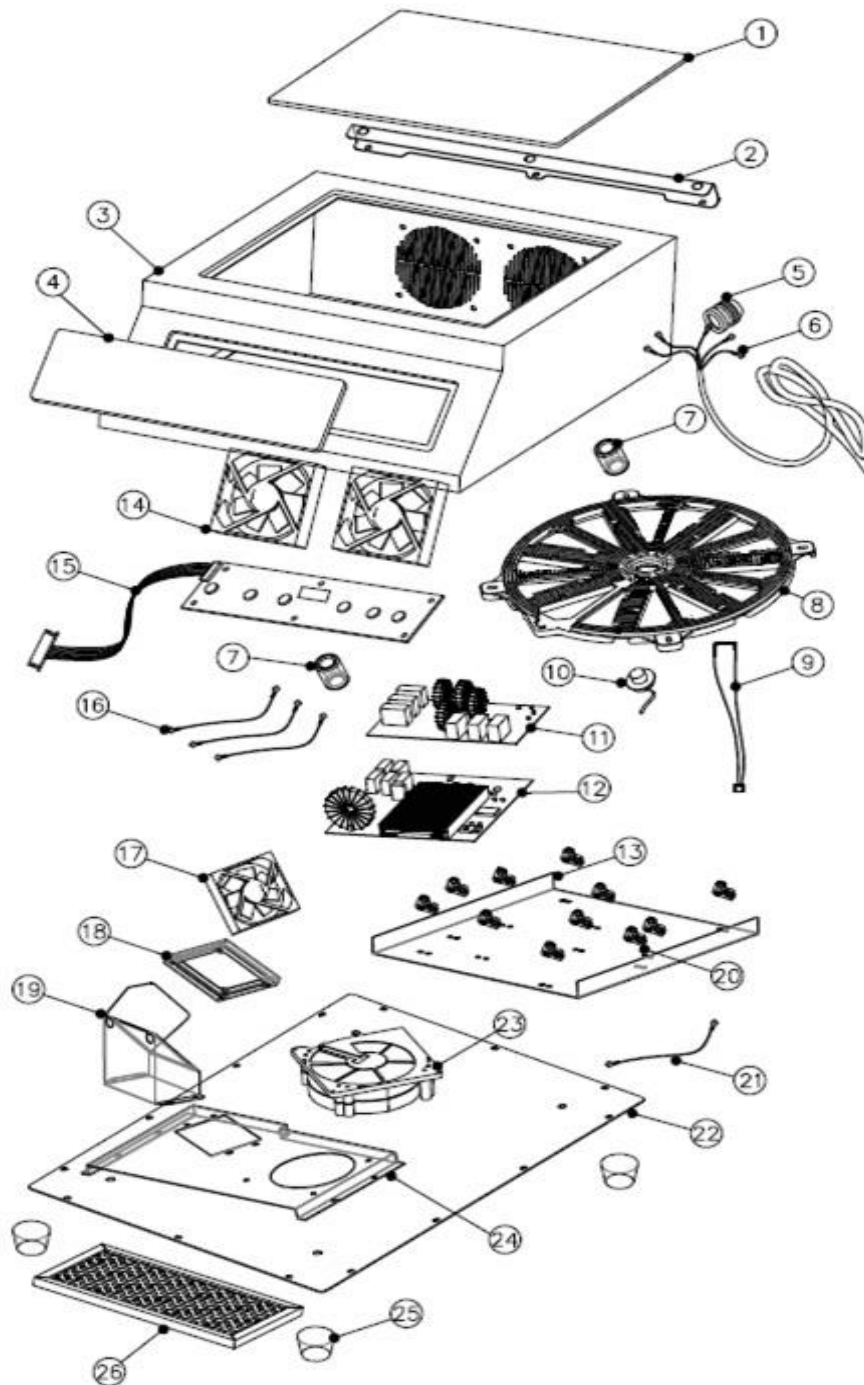



Drawing

 HENDI FOOD SERVICE EQUIPMENT Hendi B.V. Steenoven 21 3911 TX Rhenen The Netherlands	Batch #	Appliance part#
	HK170314 and up	239322
	Description	
	Induction cooker model 5000 D XL	

Date	07-05-2018	Revision #	1.0
Revision	First Bill of Materials (BOM)		



Bill of materials (BOM)

 HENDI <small>FOOD SERVICE EQUIPMENT</small> Hendi B.V. Steenoven 21 3911 TX Rhenen The Netherlands	Batch #	Appliance part#
	HK170314 and up	239322
	Description	
	Induction cooker model 5000 D XL	


Date	07-05-2018	Revision #	1.0
Revision	First Bill of Materials (BOM)		

Item	Description	Part#	Quantity	Remark	Picture
1	Glass Plate	nss	1	Available as 944721	
2	Bracket	n/a	1		
3	Upper Housing	nss	1	Available as 944721	
4	Glass Plate for Control Panel	nss	1	Available as 944721	
4A	Upper Housing with Glass	944721	1	Incl item 1,3 and 4	
5	Powercord Retention	n/a	1		
6	Power Cord	n/a	1		
7	Ferrite Ring	n/a	1		
8	Induction Coil	944738	1		
9	Thermal Fuse	nss	1	Available as 944745	
10	Sensor	nss	1	Available as 944745	
10A	Sensor Set	944745	1	Incl. item 9 and 10	
11	EMC Filter PCB	944752	1		
12	Main PCB	944769	1		
13	Aluminium Bracket	n/a	1		
14	Exhaust Fan (90X90mm)	944776	2		
15	Control PCB	944783	1		
16	Wire Bridge (Mains)	n/a	1		
17	Intake Fan Small (80X80mm)	901441	1		
18	Fan Bracket A	n/a	1		
19	Fan Bracket B	n/a	1		
20	Fulcrum Main PCB	944790	11		
21	Wire Bridge (Protected Earth)	n/a	1		
22	Bottom Plate	n/a	1		
23	Centrifugal Fan (100mm blade)	944806	1		
24	Fan Bracket C	n/a	1		
25	Foot	944813	4		
26	Filter	944820	1		
27	Thermal Fuse	944837	1	Not shown on Drawing	

n/a -> not available

nss -> not sold separately

Wiring diagram

 Hendi B.V. Steenoven 21 3911 TX Rhenen The Netherlands	Batch #		Appliance part#
	HK170314 and up		239322
	Description		
	Induction cooker model 5000 D XL		
Date	07-05-2018	Revision #	1.0
Revision	First Bill of Materials (BOM)		

